

Level TROLL Quickstart Guide

Instrument & Accessories



1. Level TROLL instrument
2. Rugged Twist-Lock Cable
3. Wireless TROLL Com or USB TROLL Com
4. Bluetooth-enabled mobile device or Windows PC

Getting Started

1 Connect the instrument to TROLL Com communication device.

Wireless TROLL Com Users

USB TROLL Com Users



A. Connect Rugged Cable to Wireless TROLL Com and instrument.



B. Instrument is ready to pair with software. Turn on the Wireless TROLL Com.



A. Connect Rugged Cable to TROLL Com and instrument.



B. Plug TROLL Com into PC.

2 Connect to the software.

Option 1: Connect to the VuSitu mobile app (recommended)

 Download the VuSitu mobile app from the Google Play Store at play.google.com.



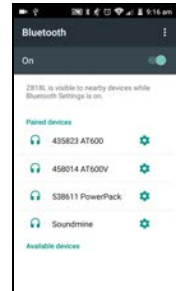
A. Turn on the Wireless TROLL Com and open VuSitu mobile app. Select **Choose or Add a Device**.



B. Select **Add New Device** when connecting for the first time.



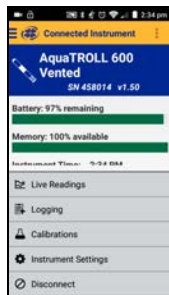
C. Locate the serial number under the yellow lid of the Wireless TROLL Com.




D. From device's Bluetooth Settings screen, tap serial number of instrument to connect.



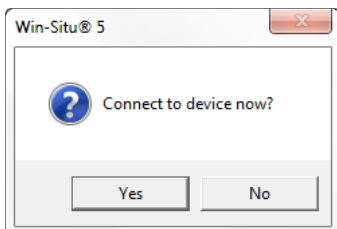
E. Tap mobile device's back button to view Connected Instrument screen.



F. Tap mobile device's back button to view Connected Instrument screen.

 VuSitu's on-screen instructions will guide you through instrument calibration, live readings, log setup and data sharing.

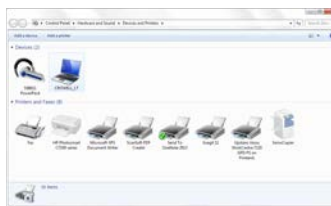
Option 2: Connect to Win-Situ on a PC via Bluetooth



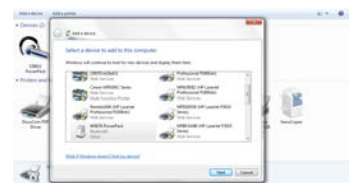
A. Open Win-Situ. Select **Yes** when asked to connect now.



B. Click **Add Bluetooth Device** button.



C. From Devices and Printers window, click **Add a device**.



D. Select your Wireless TROLL Com from the list of Bluetooth-enabled devices. Click **Next**.



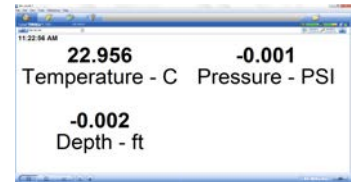
E. Make sure device is highlighted in Select a Bluetooth Device window and click check mark button.



F. Click check mark button on Default Communication Settings window to close.

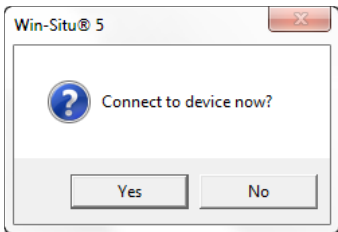


G. Click yellow connect button at bottom of screen.

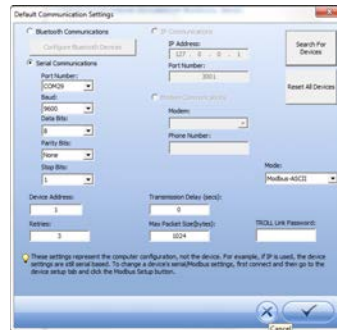


H. Your instrument is now connected to Win-Situ and you should see the Home screen.

Option 3: Connect to Win-Situ on a PC via USB TROLL Com



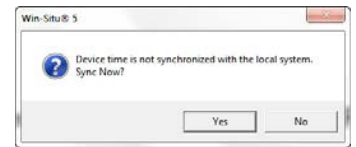
A. Open Win-Situ. Select **No** when asked *Connect to device now?*



B. Choose Preferences > Com Settings from menu bar. Select Serial Communications radio button. Click check mark button.



C. Click yellow connect button at bottom right of screen.



D. Click **Yes** if prompted to sync device time with local system.

3 Learn more.

Get complete instructions for your instrument and software in the product manual. Download it from www.in-situ.com.