

# Quick Start Guide

## Win-Situ® 4 Quick Start Guide

Use Win-Situ 4 with a laptop or PC and the TROLL® 9500 Instrument. The following instructions are for quick reference. To learn more about using Win-Situ 4 refer to the Win-Situ 4/Pocket-Situ 4 User's Guide located on the Software/Resource CD or on the website [www.in-situ.com](http://www.in-situ.com)

### Install Win-Situ 4

Insert the software CD that came with your product or download Win-Situ 4 from the In-Situ website at [www.in-situ.com/software](http://www.in-situ.com/software) Follow the on-screen prompts of the Installation Wizard to complete installation.

**IMPORTANT: Install COM drivers when prompted.**

### Connect an In-Situ Instrument to the Computer



1. Laptop or PC
2. TROLL Com
3. RuggedCable
4. TROLL 9500

### Using the Connection Wizard

1. On the first connection, select a Direct connection to One device.
2. If you are using a USB TROLL Com, select the correct COM port by following the steps below. If you are using a serial TROLL Com, the Win-Situ software should default to the correct COM port, which is usually COM 1.

#### Computers Using Windows® 7

- a. Minimize the Win-Situ Software.
- b. Click the Windows Start button, and open the Control Panel.
- c. Click Hardware and Sound, and open the Device Manager.
- d. Click the arrow next to Ports (COM and LPT), and locate the USB Serial Port listing. The number listed next to this entry is your COM port address.

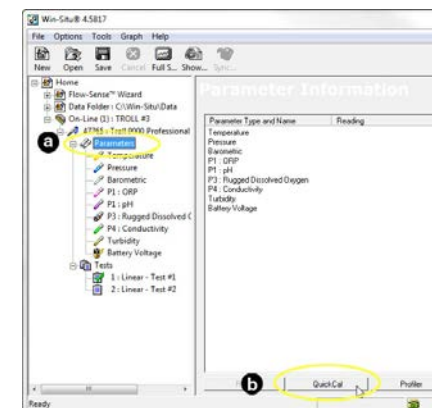
#### Computers Using Windows® XP

- a. Minimize the Win-Situ Software.
  - b. Click the Windows Start button, and open the Control Panel.
  - c. Double-click the system icon. Click the Hardware tab, and open the Device Manager.
  - d. Click the plus sign next to Ports (COM and LPT), and locate the USB Serial Port listing. The number listed next to this entry is your COM port address.
3. Reopen Win-Situ 4 and select the correct COM port. Click next.
  4. Select the connection speed 19200 and click next. You may rename your connection. Click Finish.

### Calibrate

You can perform a QuickCal calibration for the pH, ORP, Conductivity, and Clark DO sensors (**NOT RDO**), or calibrate individual sensors (if installed).

#### QuickCal



- a. Click Parameters.
- b. Click QuickCal. Follow the Calibration Instruction Wizard.
- c. **Check calibration criteria to confirm a valid calibration.**

#### Individual Calibration

- a. Click on the Parameter you want to Calibrate.
- b. Click Calibration. Follow the Calibration Instruction Wizard.
- c. **Check calibration criteria to confirm a valid calibration.**

**NOTE: For calibration details see the TROLL 9500 Operator's Manual on the In-Situ Software/Resource CD, or on the website [www.in-situ.com](http://www.in-situ.com)**

### Change Parameter Units

1. Click Options, then click Preferences.
2. Select the parameter of interest and then select from the available units displayed.

### Read Individual Parameters

1. Click the plus sign next to Parameters to display the installed sensors.
2. Click any parameter, and then click Read.

### Profiler

1. Click Parameters, and then click Profiler.
2. Enter a test name or leave as "Profiler" and click OK.
3. Click SnapShot, or click Continuous to save data points.

### Professional (Logging Instrument)

1. Click Tests.
2. Click Add...
3. Follow the Instruction Wizard. Once complete, the test appears in the Navigation Tree.
4. Click Start if you selected a manual start. A scheduled start begins automatically at its programmed time.

### Start, Stop, Extract, or Delete a Test

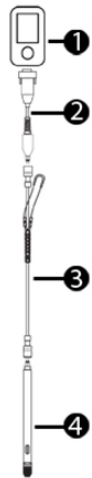
1. Click a test.
2. Click an action. The available actions depend on test status.

**NOTE: Make sure you extract test data before deleting a test.**

## Pocket-Situ® 4 Quick Start Guide

Use Pocket-Situ 4 with a RuggedReader® Handheld PC and the TROLL® 9500 Instrument. The following instructions are for quick reference. To learn more about using Pocket-Situ 4 refer to the Win-Situ 4/Pocket-Situ 4 User's Guide located on the Software/Resource CD or on the website [www.in-situ.com](http://www.in-situ.com)

### Connect an In-Situ Instrument to the RuggedReader Serial Port

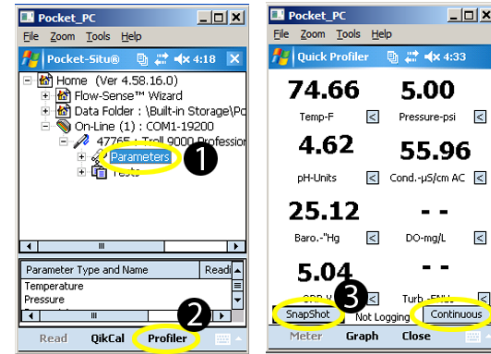


1. RuggedReader
2. TROLL Com Cable Connect
3. RuggedCable
4. In-Situ Instrument

### Connect to the Software

1. With an instrument connected, tap the Start button on the RuggedReader. Tap Pocket-Situ 4.
2. Tap the Add... button.
3. Select a Direct connection to One device.
4. Select COM1.
5. Select Baud Rate: 19200
6. You may rename the connection if you wish. Tap Finish to connect.

### Profiler



1. Tap Parameters.
2. Tap Profiler. Enter a name for the test.
3. Tap SnapShot, or tap Continuous to save data points.

### Calibrate

You can perform a QuickCal calibration for the pH, ORP, Conductivity, and Clark DO sensors (**NOT RDO**), or calibrate individual sensors (if installed).

#### QuickCal

- a. Tap Parameters.
- b. Tap QikCal, and follow the Calibration Instruction Wizard.
- c. **Check calibration criteria to confirm a valid calibration.**

#### Individual Calibration

- a. Click on the Parameter you want to Calibrate.
- b. Click Calibration. Follow the Calibration Instruction Wizard.
- c. **Check calibration criteria to confirm a valid calibration.**

**NOTE: For calibration details see the TROLL 9500 Operator's Manual on the In-Situ Software/Resource CD, or on the website [www.in-situ.com](http://www.in-situ.com)**

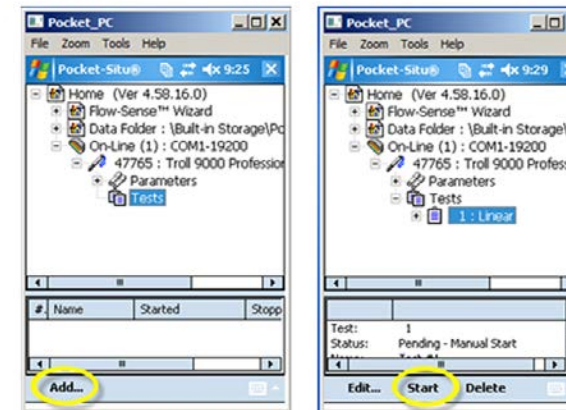
### Change Parameter Units

1. Make sure Home is highlighted.
2. Tap Setup.
3. Parameters are displayed in the top window, available units in the bottom window. Select desired units.

### Read Individual Parameters

1. Tap the plus sign next to Parameters to display the available sensors.
2. Tap any parameter.
3. Tap Read.

### Professional (Logging Instrument Only)



1. Tap Tests.
2. Tap Add...
3. Follow the Instruction Wizard. Once complete, the test appears in the Navigation Tree.
4. Tap Start if you selected a manual start. A scheduled start begins automatically at its programmed time.

### Start, Stop, Extract, or Delete a Test

1. Tap a test.
2. Tap an action. The available actions depend on test status.

**NOTE: Make sure you extract test data before deleting a test.**

### Exit Pocket-Situ Software

1. Disconnect by tapping Online and then tapping Drop.
2. Tap Home.
3. Tap Exit.

**NOTE: To connect to another TROLL 9500 Instrument, make sure you exit Pocket-Situ or drop the software connection before changing the cable connection.**



**For more information, contact In-Situ Inc.**

221 Lincoln Avenue, Fort Collins, CO 80524  
1-800-446-7488 (toll-free in U.S.A and Canada)  
1-970-498-1500 (international & domestic)

[www.in-situ.com](http://www.in-situ.com)