

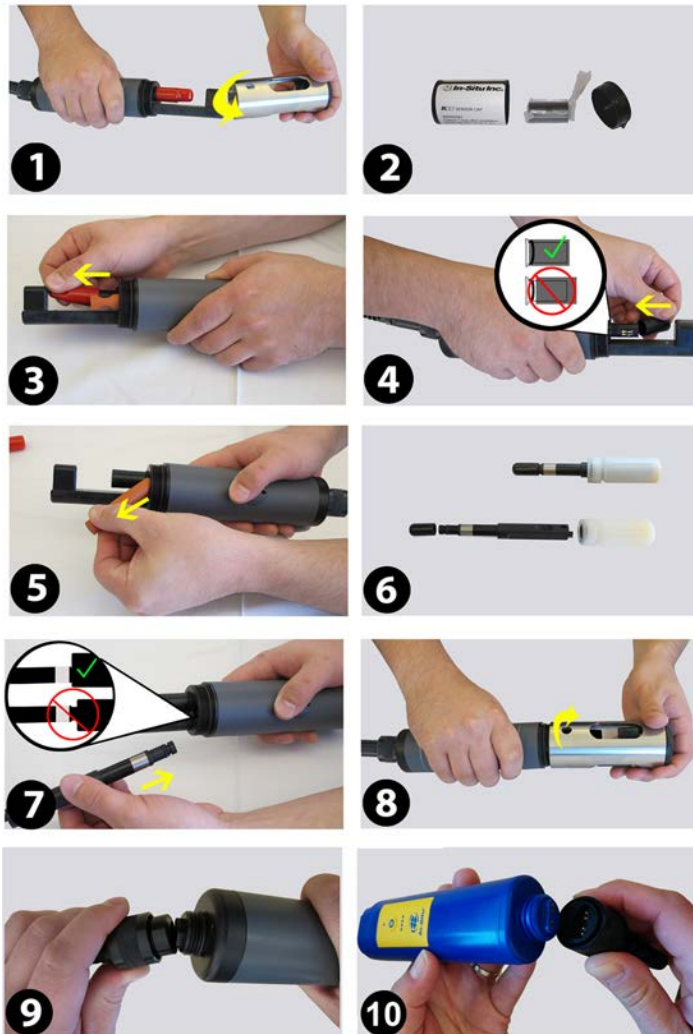
Quick Start Guide

SmarTROLL MP System



Download the complete manual at www.in-situ.com

Installing the Sensors



1. Twist the restrictor off the probe.
2. Locate the RDO Sensor Cap container and remove the cap.
3. Remove the dust cap from the RDO Sensor.
4. Align the flat edge of the RDO Sensor with the slotted edge of the RDO Cap and press the cap into position. Push until the cap is firmly in place.

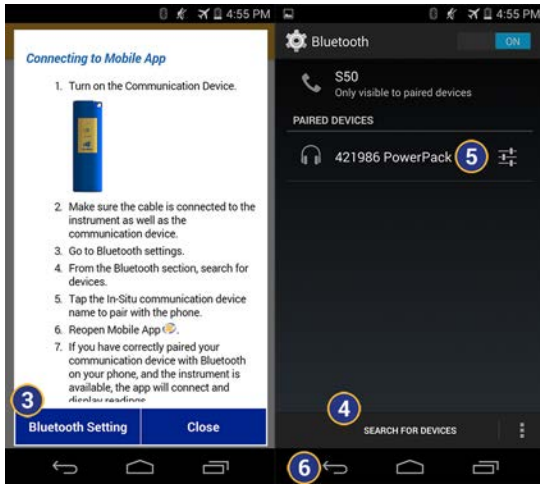
⚠ Important: Avoid touching the sensor lens and the sensing material on the top of the cap.

5. Remove the orange plug from the pH/ORP port.
6. Remove the pH/ORP sensor from the storage bottle. Keep the bottle for future sensor storage.
7. Use the alignment marks to properly align the pH/ORP sensor with the port connection, and press firmly into place. Push until the sensor is completely inserted into the port.
8. Twist the restrictor onto the probe.
9. Align the pins on the cable with the pins on the probe, then twist the outer portion of the connector until the connection is secure.
10. Align the pins on the cable with the pins on the Power Pack, then twist the outer portion of the connector until the connection is secure.

⚠ Important: The RDO Sensor Cap and pH/ORP sensor must be installed firmly in place to prevent water from entering the instrument.

Connecting to VuSitu

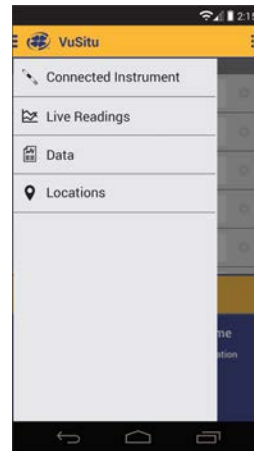
1. Turn on the Power Pack.
2. Make sure the cable is connected to the instrument as well as the communication device.
3. Go to Bluetooth settings on the phone.



4. From the Bluetooth section, search for devices.
5. Tap the In-Situ PowerPack name to pair with the phone.
6. Tap the back arrow to return to the app.
7. If you have correctly paired your communication device with Bluetooth on your phone, and the instrument is available, the app will connect and display readings.

Menu Options when Connected to Instrument

Some features, such as sensor calibration, are not available when you are not connected to an instrument.



About Calibration and Settings

You can perform sensor calibrations, view a calibration report, or restore factory calibration defaults when the instrument is connected to VuSitu.

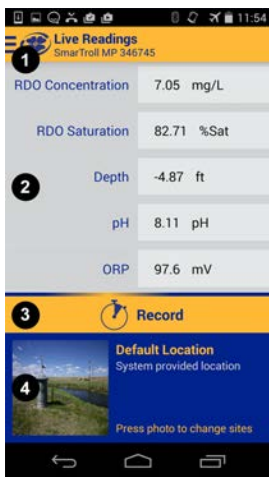
1. Tap the VuSitu menu icon, and select Connected Instrument from the list.
2. Tap Calibrations.
3. The available calibrations and sensor settings appear.



4. Tap the calibration you want to perform.

✓ You can also access the full Calibration Report from this menu.

Live Readings Screen



1	Slide-out menu
2	Instrument readings (scroll for more)
3	Record button
4	Change location

VuSitu Menu Options

The features available in the VuSitu Mobile App vary slightly depending on the instrument with which it is connected. Tap the menu icon in the upper left portion of the screen to view the features included in VuSitu. Tap the menu icon again to close the menu.