

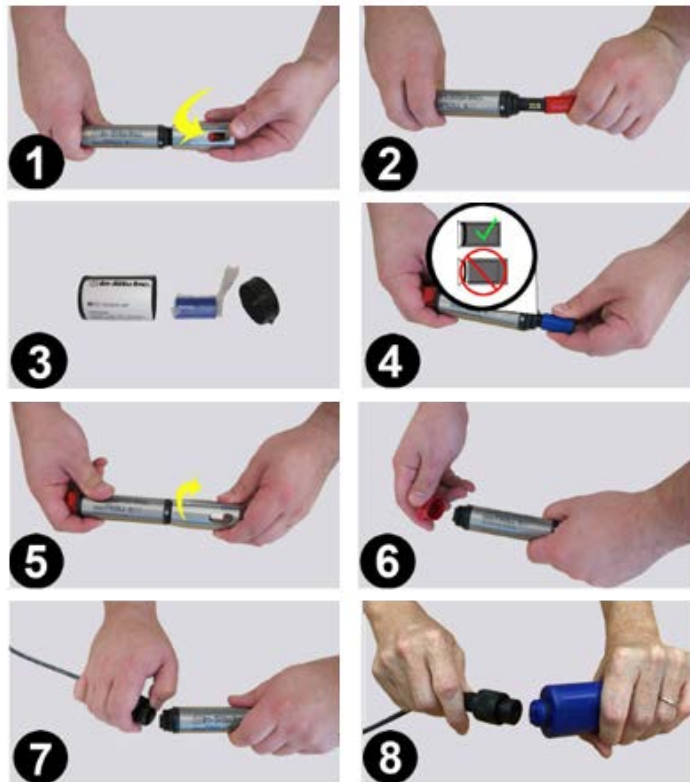
# Quick Start Guide

## SmarTROLL RDO System



Download the complete manual at [www.in-situ.com](http://www.in-situ.com)

### Installing the Sensor and Cable



1. Twist the restrictor off the probe.
2. Remove the dust cap from the sensor lens.
3. Locate the RDO Sensor Cap container and remove the cap from the packaging.

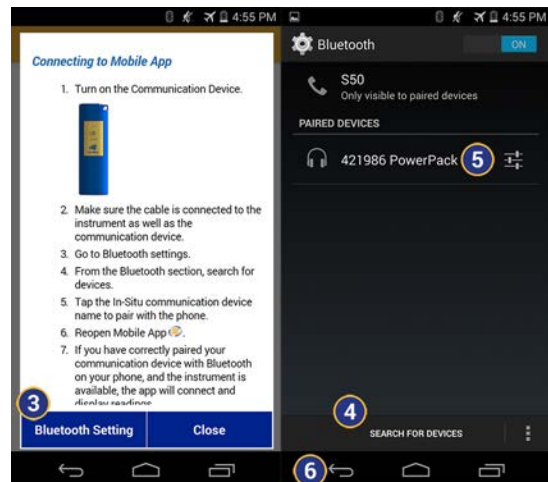
**⚠ Important:** Avoid touching the sensor lens and the sensing material on top of the cap.

4. Align the flat edge of the RDO Sensor with the slotted edge of the RDO Cap and press the cap into position. Push until the cap is firmly in place.
5. Twist the restrictor onto the probe.
6. Remove the dust cap from the cable connector.
7. Align the pins on the cable with the pins on the probe, then twist the outer portion of the connector until the connection is secure.
8. Align the pins on the cable with the pins on the Power Pack, then twist the outer portion of the connector until the connection is secure.

**⚠ Important:** The RDO Sensor Cap must be installed firmly in place to prevent water from entering the instrument.

### Connecting to VuSitu

1. Turn on the Power Pack.
2. Make sure the cable is connected to the instrument as well as the communication device.
3. Go to Bluetooth settings on the phone.



4. From the Bluetooth section, search for devices.
5. Tap the In-Situ Power Pack name to pair with the phone.
6. Tap the back arrow to return to the app.
7. If you have correctly paired your communication device with Bluetooth on your phone, and the instrument is available, the app will connect and display readings.



In general, it is necessary to pair the devices only the first time you use them. After you have paired the first time, turn on the communication device and open the app for direct communication with the instrument.

1. Tap the VuSitu menu icon, and select Connected Instrument from the list.
2. Tap Calibrations.
3. The available calibrations and sensor settings appear.

### Live Readings Screen



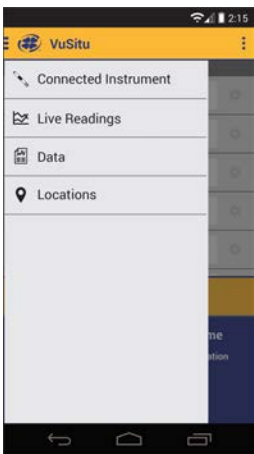
1	Slide-out menu
2	Instrument readings (scroll for more)
3	Record button
4	Change location

### VuSitu Menu Options

The features available in the VuSitu Mobile App vary slightly depending on the instrument with which it is connected. Tap the menu icon in the upper left portion of the screen to view the features included in VuSitu. Tap the menu icon again to close the menu.

#### Menu Options when Connected to Instrument

Some features, such as sensor calibration, are not available when you are not connected to an instrument.



4. Tap the calibration you want to perform.



You can also access the full Calibration Report from this menu.

### RDO Salinity Setting

The SmarTROLL RDO does not include automatic salinity compensation, so you must set it manually.

1. From the main menu, select **Connected Instrument**.
2. Select **Instrument Settings**.
3. From the Instrument Settings menu select **Salinity Setting**.
4. Select the appropriate setting for your sampling environment.

Power Pack reorder number: 0031230

### About Calibration and Settings

You can perform sensor calibrations, view a calibration report, or restore factory calibration defaults when the instrument is connected to VuSitu.